

# PrintCare

**RUBBERBLANKETS**

ISO 9001:2008

## HS-Elite

High Quality Heatset Web and  
High Speed Sheetfed Blanket

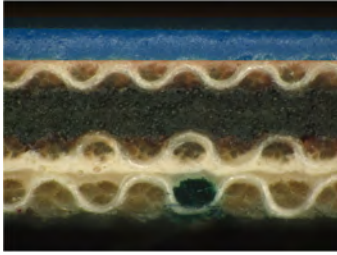
Converted by AtéCé Graphic Products

**AtéCé**  
GRAPHIC PRODUCTS

[www.atece.com](http://www.atece.com)

AtéCé Graphic Products  
Molenwerf 14 - 1911 DB Uitgeest  
P.O. Box 49 - 1910 AA Uitgeest  
The Netherlands

T +31 (0) 251 - 319109  
F +31 (0) 251 - 315850  
E [info@atece.com](mailto:info@atece.com)



# PrintCare Rubber Blankets

## HS-Elite

PrintCare HS-Elite is an innovative offset blanket that uses the unique AtéCé PrintCare compressible layer technology. Designed for use on high quality heatset web and sheetfed applications.

|                    |   |
|--------------------|---|
| <b>INNOVATION</b>  | AtéCé a major global <b>blanket converter</b> leads the industry with innovative blanket development. Our commitment is to continue developing and delivering innovative products that improve  |
| <b>TECHNOLOGY</b>  | PrintCare compressible layer is the most advanced production technique available and is the next generation in blanket manufacturing.   |
| <b>RELIABILITY</b> | The consistency and quality of our new PrintCare compressible layer technology and improved gauge control from our advanced buffing techniques gives a superior result, faster recovery on press, improved smash resistance and reduces gauge loss. |
| <b>VALUE</b>       | Improvements provided by PrintCare compressible layer means exceptional long life from the blanket, improving production time and reducing down-times on press.   |
| <b>ECOLOGY</b>     | PrintCare compressible layer production is solvent free, another first in innovation from AtéCé.  |

## surface

|                 |  |
|-----------------|--|
| Rubber compound | For high speed heatset and sheet fed application |
| Surface finish  | Buffed & polished                                |
| Roughness (Ra)  | 1,30 µm  |
| Colour          | Blue   |

## construction

|                           |                       |
|---------------------------|-----------------------|
| Compressible layer design | Closed Cell PrintCare |
| Nominal thickness         | 1.95 mm & 1.68 mm     |
| Fabric plies              | 3 plies               |

## physical property

|                                  |                                   |
|----------------------------------|-----------------------------------|
| Thickness range                  | 1.97 ± 0.02 mm and 1.71 ± 0.02 mm |
| Overall hardness (Shore A)       | 82°                               |
| Micro hardness (Shore A)         | 55°                               |
| Tensile strength at break        | > 85 N/mm                         |
| Elongation at 10 N/mm            | < 1,2 %                           |
| Compressibility indentation 0.20 | 1,57 MPa                          |

